

# LIV<sup>®</sup> ASTON



NORTH WHARF, MELBOURNE



## STUDIO APARTMENT FLOOR PLANS

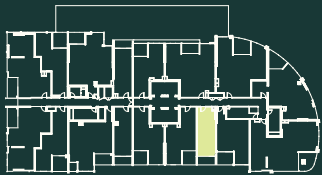
Please speak to our LIV Aston leasing team to find out more about what apartments are available to rent.

## APARTMENT TYPE 06 (ST3.2)

1 BED  1 BATH 

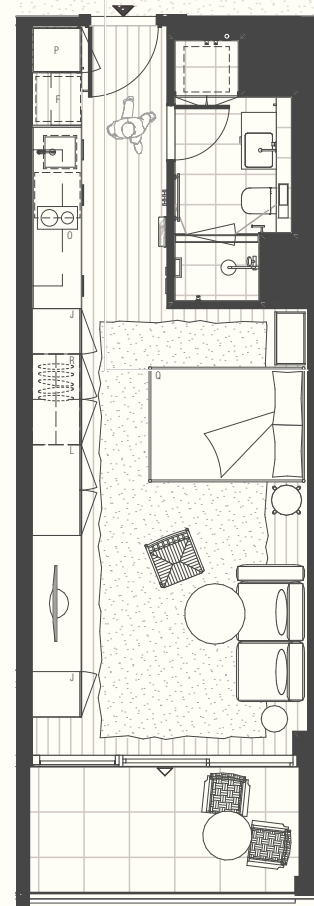
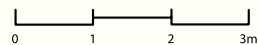
Apartment Area: 38m<sup>2</sup>  
 Balcony/Winter Garden Area: 6m<sup>2</sup>  
 Total Area: 44m<sup>2</sup>

|         |   |                |   |
|---------|---|----------------|---|
| Access  | ▲ | Balcony Access | △ |
| Fridge  | F | Queen Bed      | Q |
| Pantry  | P | Linen          | L |
| Oven    | O | Robe           | R |
| Joinery | J |                |   |





### Important Notice

This floor plan was produced prior to construction and while the information contained herein is believed to be correct it is not guaranteed. Changes will undoubtedly be made during construction. The plan does not show additional features such as hot water systems, services or bulkheads necessary for services. Dimensions, areas and scale of floor plans are approximate only. Areas have been calculated in accordance with the Property Council of Australia Method of Measurement. The furniture and furnishings depicted are excluded from the lease of this apartment except where expressly included in a leasing agreement or condition report. Tenants must refer to their leasing agreement and condition report for the list of inclusions. Furnishings should not be taken to indicate the final position of power points, TV connection points and the like. All graphics, including design and extent of tile/paver/carpet areas, landscaping, balustrades, louvres, sun shading devices, fencing, privacy screens, services equipment are for illustrative purposes only and are not to be relied on as a representative of the final product.

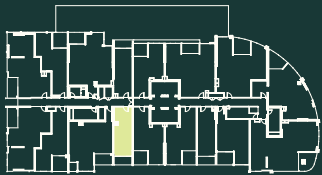


## APARTMENT TYPE 09 (ST3)

1 BED  1 BATH 

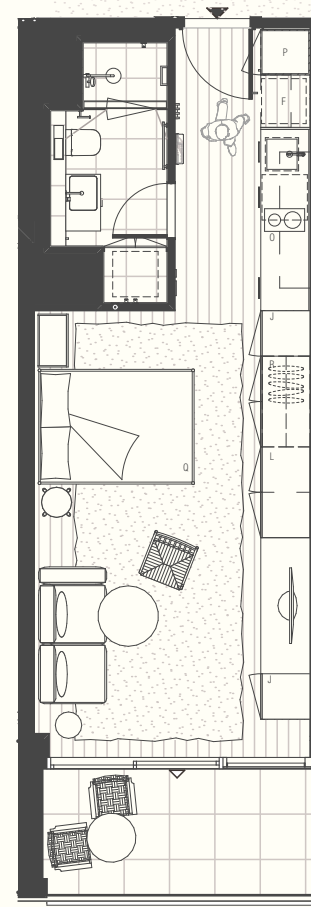
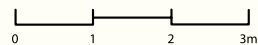
Apartment Area: 38m<sup>2</sup>  
 Balcony/Winter Garden Area: 6m<sup>2</sup>  
 Total Area: 44m<sup>2</sup>

|         |   |                |   |
|---------|---|----------------|---|
| Access  | ▲ | Balcony Access | △ |
| Fridge  | F | Queen Bed      | Q |
| Pantry  | P | Linen          | L |
| Oven    | O | Robe           | R |
| Joinery | J |                |   |





### Important Notice

This floor plan was produced prior to construction and while the information contained herein is believed to be correct it is not guaranteed. Changes will undoubtedly be made during construction. The plan does not show additional features such as hot water systems, services or bulkheads necessary for services. Dimensions, areas and scale of floor plans are approximate only. Areas have been calculated in accordance with the Property Council of Australia Method of Measurement. The furniture and furnishings depicted are excluded from the lease of this apartment except where expressly included in a leasing agreement or condition report. Tenants must refer to their leasing agreement and condition report for the list of inclusions. Furnishings should not be taken to indicate the final position of power points, TV connection points and the like. All graphics, including design and extent of tile/paver/carpet areas, landscaping, balustrades, louvres, sun shading devices, fencing, privacy screens, services equipment are for illustrative purposes only and are not to be relied on as a representative of the final product.

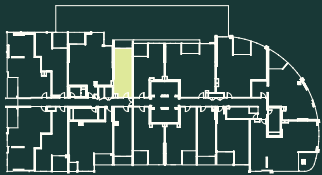


## APARTMENT TYPE 16 (ST3.1)

1 BED  1 BATH 

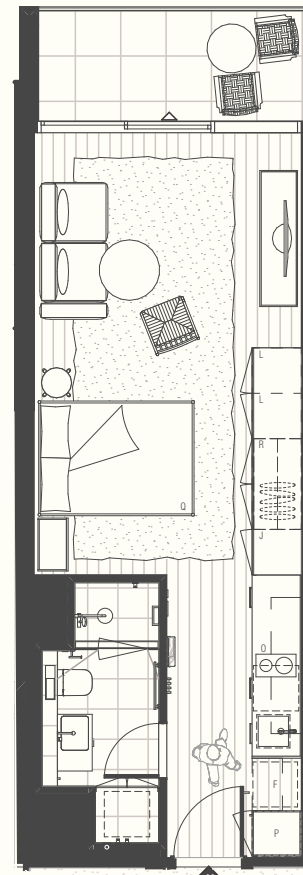
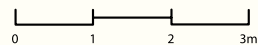
Apartment Area: 38m<sup>2</sup>  
 Balcony/Winter Garden Area: 6m<sup>2</sup>  
 Total Area: 44m<sup>2</sup>

|         |   |                |   |
|---------|---|----------------|---|
| Access  | ▲ | Balcony Access | △ |
| Fridge  | F | Queen Bed      | Q |
| Pantry  | P | Linen          | L |
| Oven    | O | Robe           | R |
| Joinery | J |                |   |





### Important Notice

This floor plan was produced prior to construction and while the information contained herein is believed to be correct it is not guaranteed. Changes will undoubtedly be made during construction. The plan does not show additional features such as hot water systems, services or bulkheads necessary for services. Dimensions, areas and scale of floor plans are approximate only. Areas have been calculated in accordance with the Property Council of Australia Method of Measurement. The furniture and furnishings depicted are excluded from the lease of this apartment except where expressly included in a leasing agreement or condition report. Tenants must refer to their leasing agreement and condition report for the list of inclusions. Furnishings should not be taken to indicate the final position of power points, TV connection points and the like. All graphics, including design and extent of tile/paver/carpet areas, landscaping, balustrades, louvres, sun shading devices, fencing, privacy screens, services equipment are for illustrative purposes only and are not to be relied on as a representative of the final product.

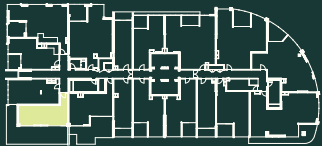


## APARTMENT TYPE ST5

1 BED  1 BATH 

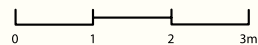
Apartment Area: 46m<sup>2</sup>  
 Balcony/Winter Garden Area: 30m<sup>2</sup>  
 Total Area: 76m<sup>2</sup>

|         |   |                |   |
|---------|---|----------------|---|
| Access  | ▲ | Balcony Access | △ |
| Fridge  | F | Queen Bed      | Q |
| Pantry  | P | Linen          | L |
| Oven    | O | Robe           | R |
| Joinery | J |                |   |





### Important Notice

This floor plan was produced prior to construction and while the information contained herein is believed to be correct it is not guaranteed. Changes will undoubtedly be made during construction. The plan does not show additional features such as hot water systems, services or bulkheads necessary for services. Dimensions, areas and scale of floor plans are approximate only. Areas have been calculated in accordance with the Property Council of Australia Method of Measurement. The furniture and furnishings depicted are excluded from the lease of this apartment except where expressly included in a leasing agreement or condition report. Tenants must refer to their leasing agreement and condition report for the list of inclusions. Furnishings should not be taken to indicate the final position of power points, TV connection points and the like. All graphics, including design and extent of tile/paver/carpet areas, landscaping, balustrades, louvres, sun shading devices, fencing, privacy screens, services equipment are for illustrative purposes only and are not to be relied on as a representative of the final product.



## APARTMENT TYPE SST2

1 BED  1 BATH 

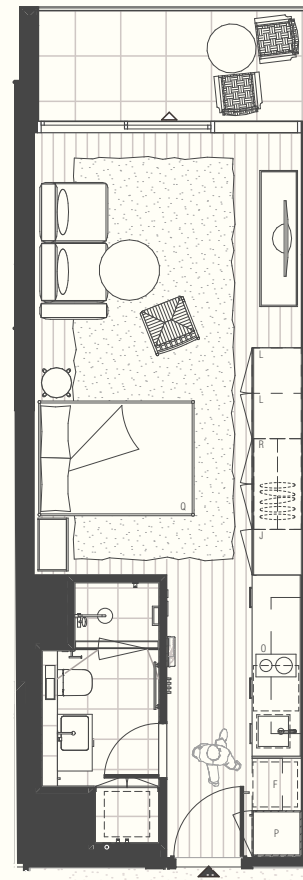
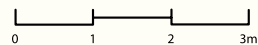
Apartment Area: 38m<sup>2</sup>  
 Balcony/Winter Garden Area: 6m<sup>2</sup>  
 Total Area: 44m<sup>2</sup>

|         |   |                |   |
|---------|---|----------------|---|
| Access  | ▲ | Balcony Access | △ |
| Fridge  | F | Queen Bed      | Q |
| Pantry  | P | Linen          | L |
| Oven    | O | Robe           | R |
| Joinery | J |                |   |





### Important Notice

This floor plan was produced prior to construction and while the information contained herein is believed to be correct it is not guaranteed. Changes will undoubtedly be made during construction. The plan does not show additional features such as hot water systems, services or bulkheads necessary for services. Dimensions, areas and scale of floor plans are approximate only. Areas have been calculated in accordance with the Property Council of Australia Method of Measurement. The furniture and furnishings depicted are excluded from the lease of this apartment except where expressly included in a leasing agreement or condition report. Tenants must refer to their leasing agreement and condition report for the list of inclusions. Furnishings should not be taken to indicate the final position of power points, TV connection points and the like. All graphics, including design and extent of tile/paver/carpet areas, landscaping, balustrades, louvres, sun shading devices, fencing, privacy screens, services equipment are for illustrative purposes only and are not to be relied on as a representative of the final product.



## APARTMENT TYPE SST1

1 BED  1 BATH 

Apartment Area: 53m<sup>2</sup>  
 Balcony/Winter Garden Area: 0m<sup>2</sup>  
 Total Area: 53m<sup>2</sup>

|         |   |                |   |
|---------|---|----------------|---|
| Access  | ▲ | Balcony Access | △ |
| Fridge  | F | Queen Bed      | Q |
| Pantry  | P | Linen          | L |
| Oven    | O | Robe           | R |
| Joinery | J |                |   |



### Important Notice

This floor plan was produced prior to construction and while the information contained herein is believed to be correct it is not guaranteed. Changes will undoubtedly be made during construction. The plan does not show additional features such as hot water systems, services or bulkheads necessary for services. Dimensions, areas and scale of floor plans are approximate only. Areas have been calculated in accordance with the Property Council of Australia Method of Measurement. The furniture and furnishings depicted are excluded from the lease of this apartment except where expressly included in a leasing agreement or condition report. Tenants must refer to their leasing agreement and condition report for the list of inclusions. Furnishings should not be taken to indicate the final position of power points, TV connection points and the like. All graphics, including design and extent of tile/paver/carpet areas, landscaping, balustrades, louvres, sun shading devices, fencing, privacy screens, services equipment are for illustrative purposes only and are not to be relied on as a representative of the final product.

